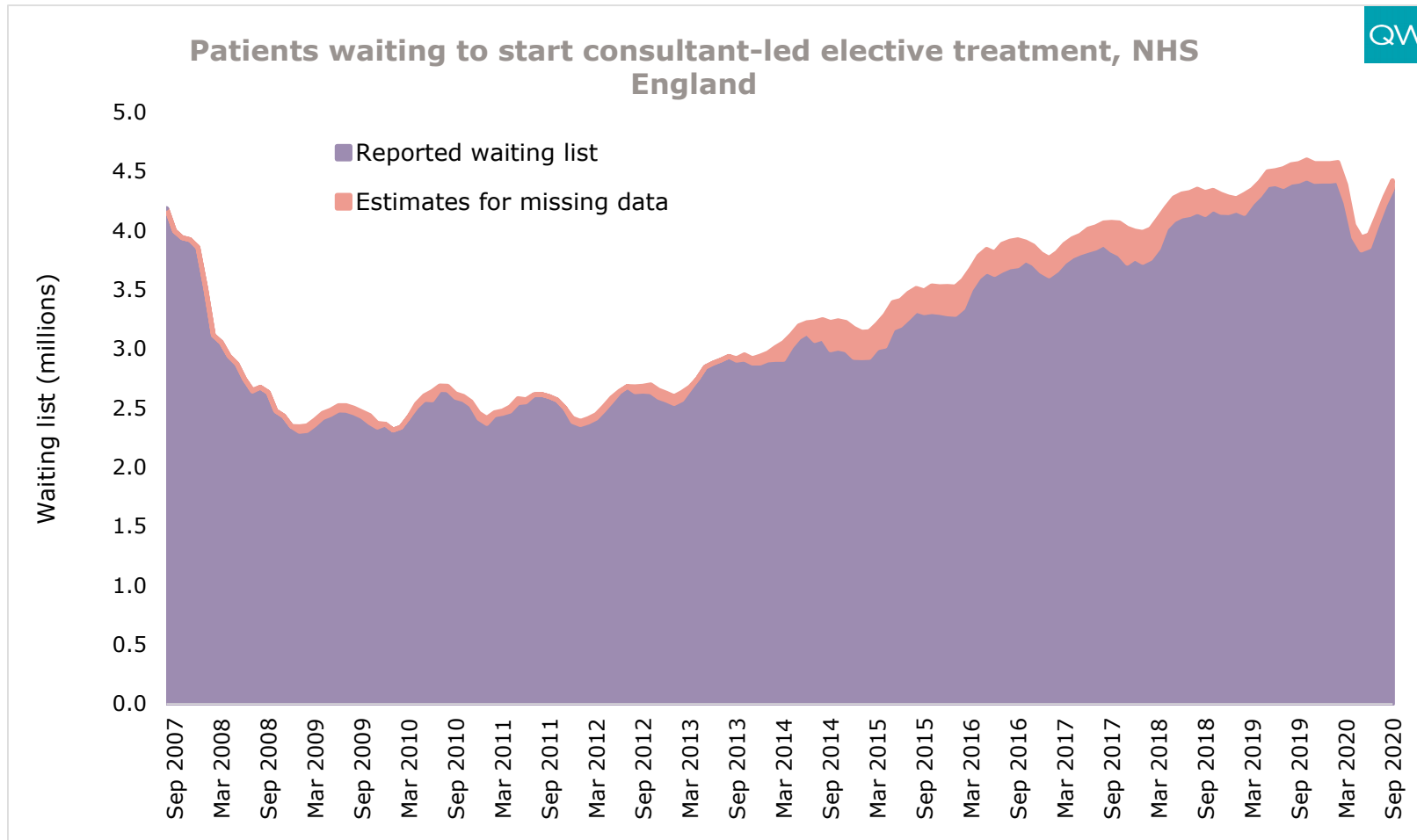


# **Covid-19 and the NHS: Apocalypse or accelerant?**

November 2020

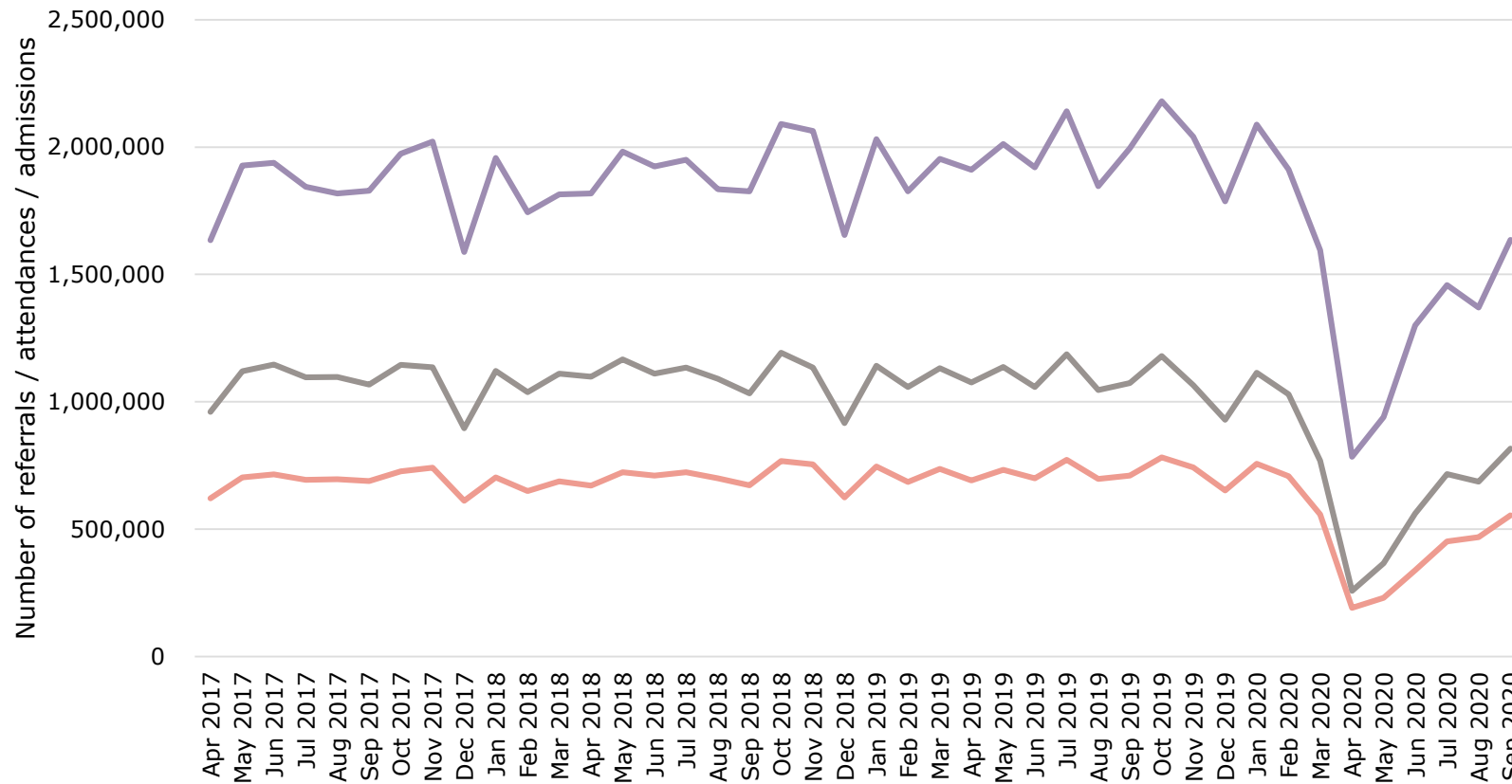
Nigel Edwards, Nuffield Trust

# Planned care: miraculous improvement after years of mounting pressure?



# ... or storing up more for the future?

General and acute GP referrals and NHS hospital activity



**First outpatient attendances**  
**59% fall April to April**

**GP referrals**  
**76% fall April to April**

**Planned hospital admissions**  
**72% fall April to April**

# Reductions in new pathways

1.5-1.6m new pathways a month in 2019

Slow down in 2020/21 of 34%

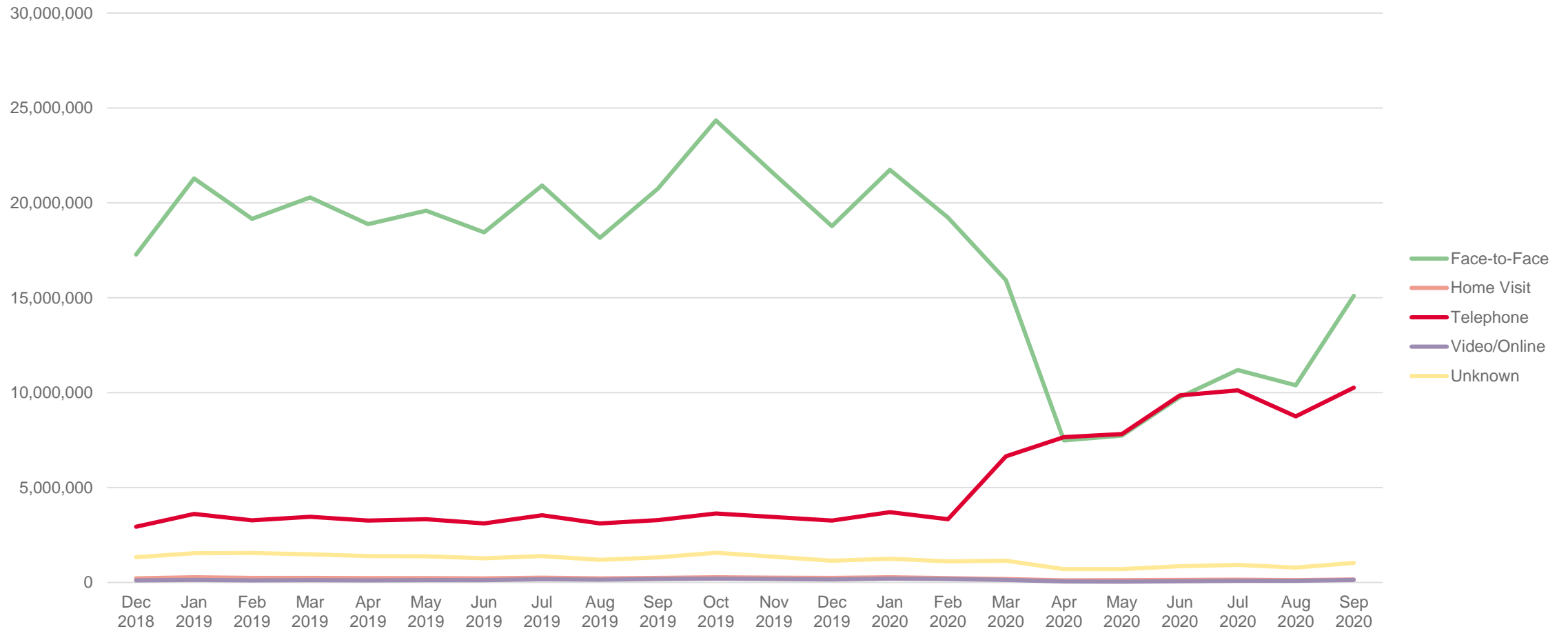
Oral maxillary surgery 43% lower

Orthopaedics 42% lower

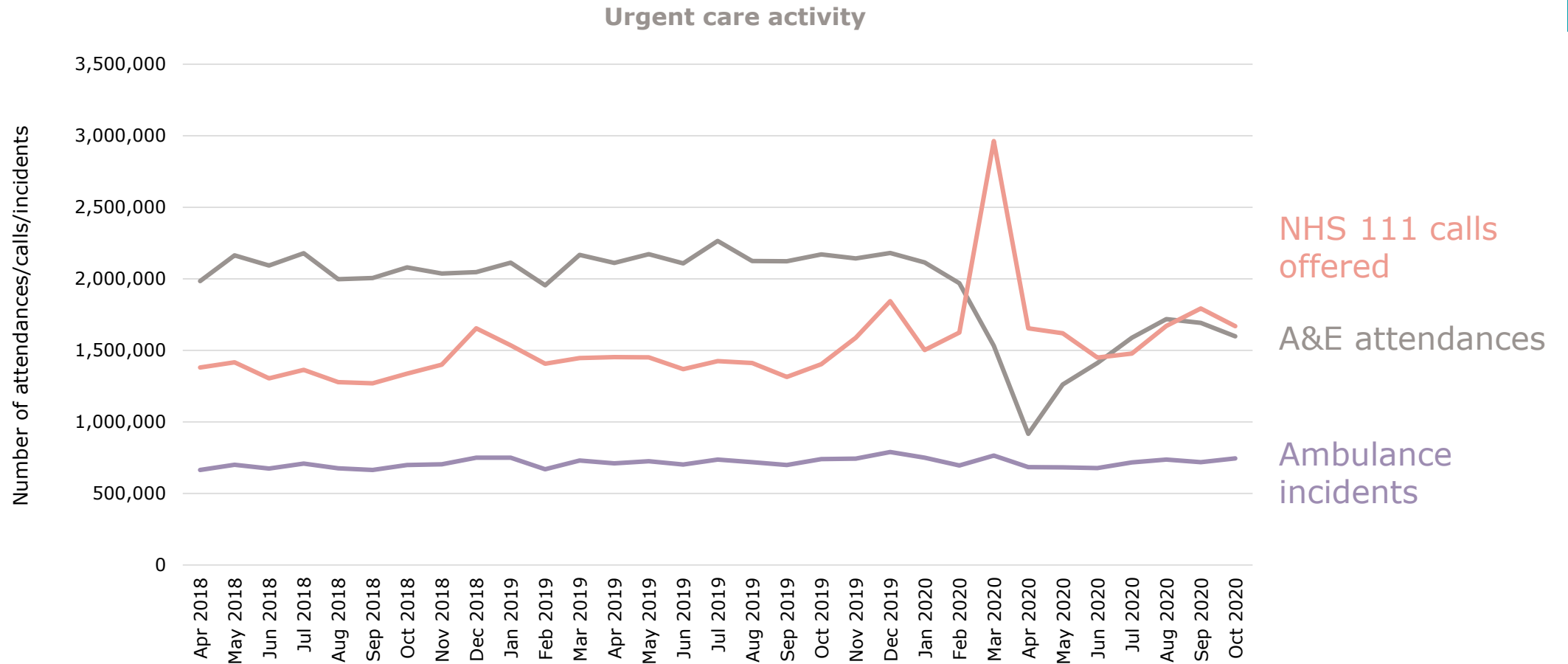
Ophthalmology 41%

# General practice: the triumph of tech?

Number of monthly recorded GP appointments, England



# A new front door for the NHS?



# Mutual aid in the NHS

