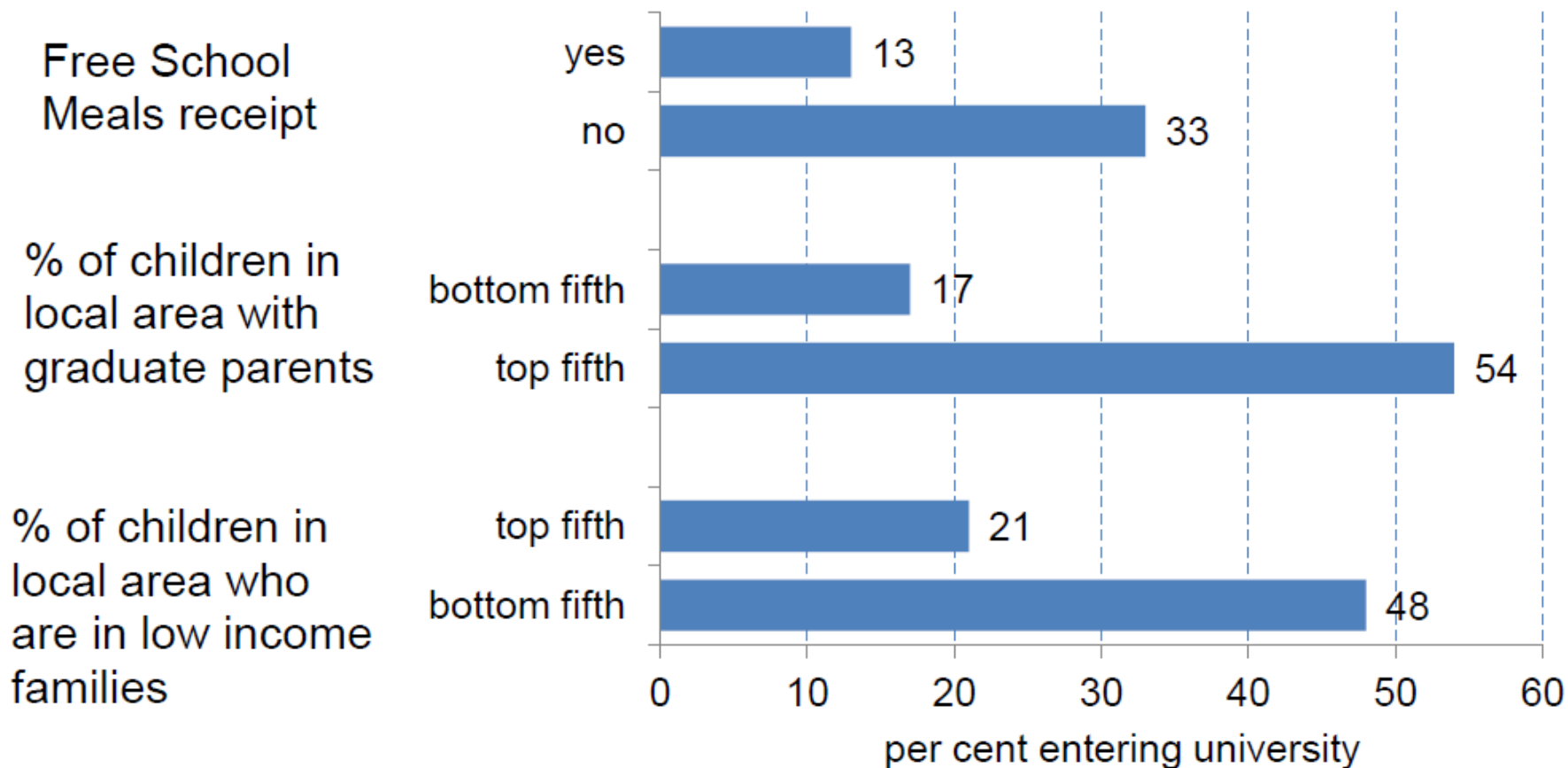


Higher Education Funding and Access: Introduction to the Issues

John Micklewright
Institute of Education

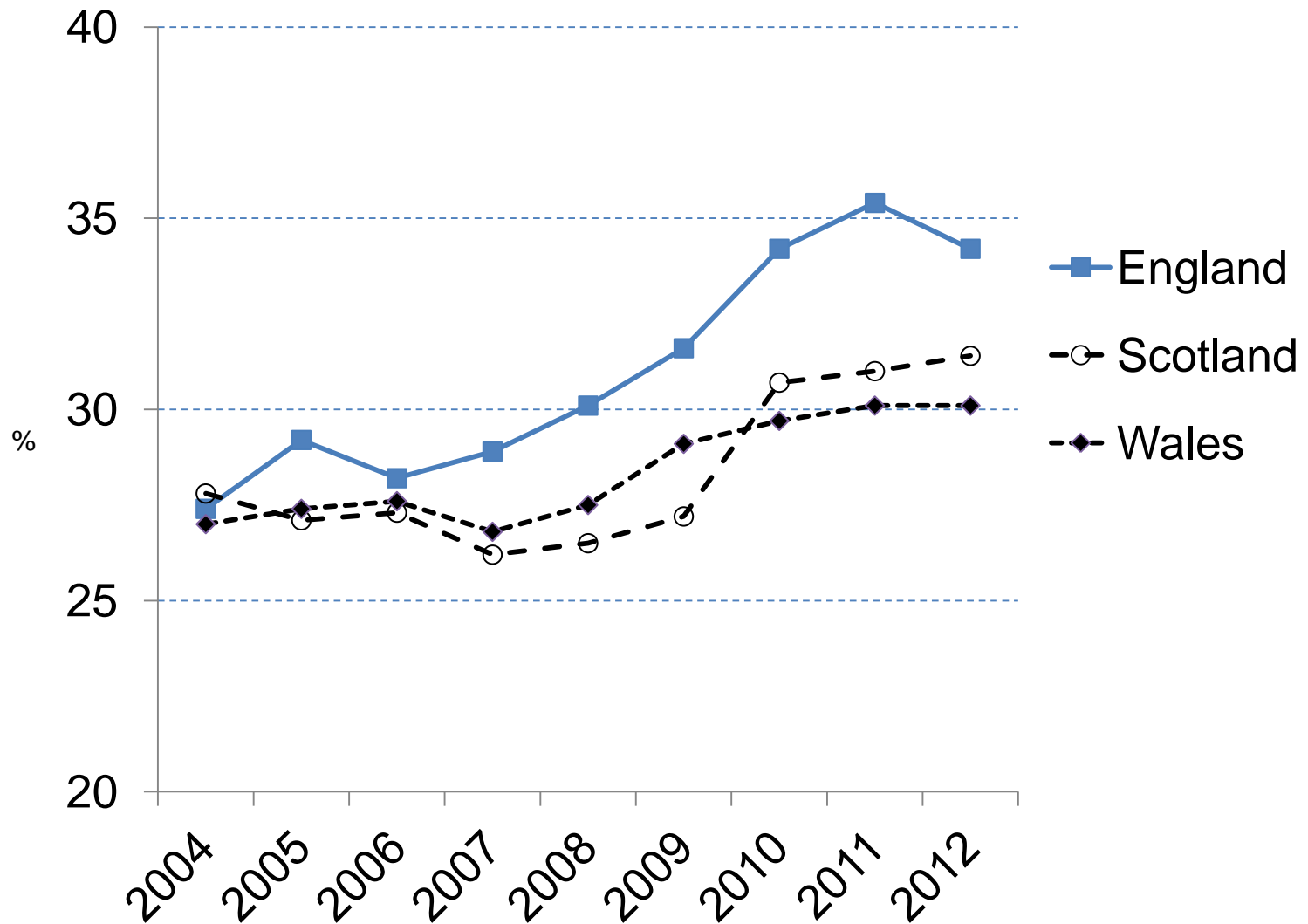
University participation rates by family background, 2005/6



2012 reforms

- include a rise in the maximum UG fee in England to £9,000 p.a.
- fees depend on
 - where you live
 - where you apply to
- reports from UCAS, Independent Commission on Fees, and Higher Education Policy Institute

Application rates to UK universities by country of domicile: 18 year olds



Application rates to UK universities by quintile groups of local area income: 18 year olds in England

